

DEBRIS PICKUP

The City will begin debris pickup the week of October 7th. Be sure you follow the guidelines below when hauling hurricane-related debris and household garbage to the curb.

SHIP Disaster Grant Funds
Available for home repairs and/or rental assistance up to \$25k
Please contact Pasco County Community Development at (727) 834-3447

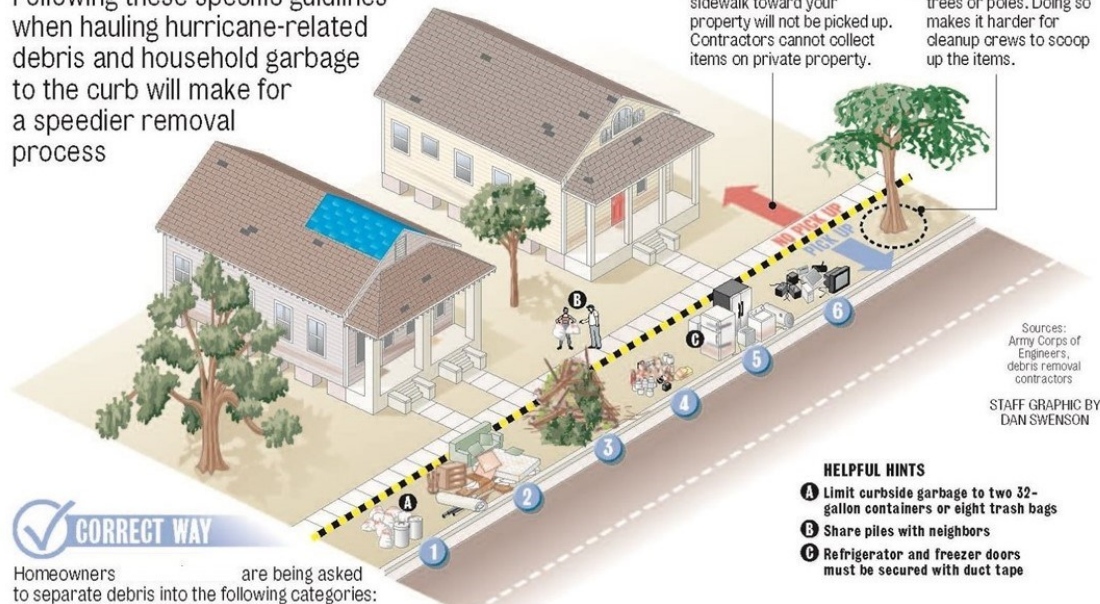
FREE Disaster Assistance
Our Lady Queen of Peace Catholic Church
5417 High Street, New Port Richey
Now-October 16, 2024 from 8AM-6PM

Hurricane Helene Resource Guide



PICKING UP THE PIECES

Following these specific guidelines when hauling hurricane-related debris and household garbage to the curb will make for a speedier removal process



WRONG WAY

- CROSSING THE LINE**
Any debris placed from the sidewalk toward your property will not be picked up. Contractors cannot collect items on private property.
- PROPPING UP**
Do not set debris against trees or poles. Doing so makes it harder for cleanup crews to scoop up the items.

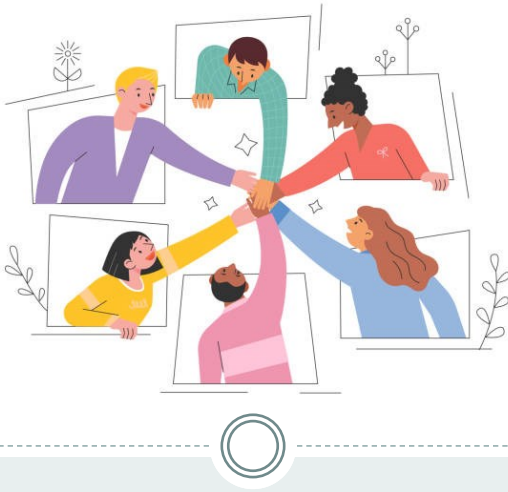
Sources:
Army Corps of Engineers,
debris removal contractors
STAFF GRAPHIC BY
DAN SWENSON

- HELPFUL HINTS**
- A** Limit curbside garbage to two 32-gallon containers or eight trash bags
 - B** Share piles with neighbors
 - C** Refrigerator and freezer doors must be secured with duct tape

CORRECT WAY
Homeowners are being asked to separate debris into the following categories:

- | | | | | | |
|--|--|---|--|--|--|
| <p>1 HOUSEHOLD GARBAGE</p> <ul style="list-style-type: none"> ▶ Bagged trash ▶ Discarded food ▶ Packaging, papers ▶ All garbage should be placed curbside the night before the scheduled weekly pickup. | <p>2 CONSTRUCTION DEBRIS</p> <ul style="list-style-type: none"> ▶ Building materials ▶ Drywall ▶ Lumber ▶ Carpet ▶ Furniture ▶ Mattresses ▶ Plumbing | <p>3 VEGETATION DEBRIS</p> <ul style="list-style-type: none"> ▶ Tree branches ▶ Leaves ▶ Logs | <p>4 HOUSEHOLD HAZARDOUS WASTE</p> <ul style="list-style-type: none"> ▶ Oils ▶ Batteries ▶ Pesticides ▶ Paints ▶ Cleaning supplies ▶ Compressed gas | <p>5 'WHITE' GOODS</p> <ul style="list-style-type: none"> ▶ Refrigerators ▶ Washers, dryers ▶ Freezers ▶ Air conditioners ▶ Stoves ▶ Water heaters ▶ Dishwashers | <p>6 ELECTRONICS</p> <ul style="list-style-type: none"> ▶ Televisions ▶ Computers ▶ Radios ▶ Stereos ▶ DVD players ▶ Telephones |
|--|--|---|--|--|--|





Community of Neighbors

As we move forward in our recovery efforts from Hurricane Helene, please know that the City is here to support you.

Unfortunately, many of our residents and businesses were extremely affected by the flooding due to Hurricane Helene.

With all of the uncertainty at this time we hope that this resource guide will be able to provide much needed information to you.

For up to date information, please visit our website at www.cityofnewportrichey.org.

Remember, we are all in this together. We are strong. We are resilient. We are New Port Richey.

Sincerely,

Debbie L. Manns, City Manager

COMFORT STATIONS

The City has partnered with Pasco County to open a comfort station located at the Recreation & Aquatic Center, 6630 Van Buren Street for those city residents who have been impacted by Hurricane Helene. The comfort station is open from 7AM-7PM daily.

The comfort station is equipped with:

- Air Conditioning
- Restrooms
- Showers (bring your own toiletries)
- Laundry (bring your own supplies)
- Charging stations

Pasco County also has four comfort stations that are open from 7AM-8PM daily located at:

- Hudson Library, 8012 Library Rd, Hudson
- J. Ben Harrill Recreation Complex, 2830 Gulf Trace Blvd, Holiday
- Aripeka Baptist Church, 18731 Aripeka Rd
- Green Key Location, 6435 US-19, New Port Richey

Need a ride to a comfort station? Pasco County has partnered with GoPasco and Uber to give free rides for Hurricane Helene victims in Pasco County.

GoPasco: Call Pasco Customer Service at (727) 847-2411 to book. Please call at least 3 hours ahead for a round-trip reservation. Rides are available during comfort station operating hours, so please plan accordingly.

UBER: To get a ride:

- Open the Uber app
- Tap Account on the bottom right & tap Wallet
- Add promo code PASCOSTRONG

FEMA ASSISTANCE

To apply for FEMA assistance:

- Visit www.DisasterAssistance.gov
- Download the FEMA app
- Call 1-800-621-FEMA

The City of New Port Richey has opened a service center to assist city residents with filling out FEMA forms in regards to Hurricane Helene. The service center is located in the New Port Richey Public Library, 5939 Main Street, New Port Richey and will be open Tuesday, October 1, 2024 through Saturday, October 12, 2024 from 10AM to 5PM with the exception of Sunday, October 6th as the Library is not open on Sundays. This is a walk-in service center so therefore residents do not need to make an appointment for assistance.

To make the process go more smoothly, please bring the following information with you:

- Social Security Number
- Insurance Information (describe the type of coverage you have)
- Damage Information (describe the damage you have)
- Financial Information (annual income)
- Contact Information (name, address, phone number, email)
- Direct Deposit Information (bank name, routing number, account number)