

Figure 4.3a. Temporary Gravel Construction Entrance
Source: Erosion Draw

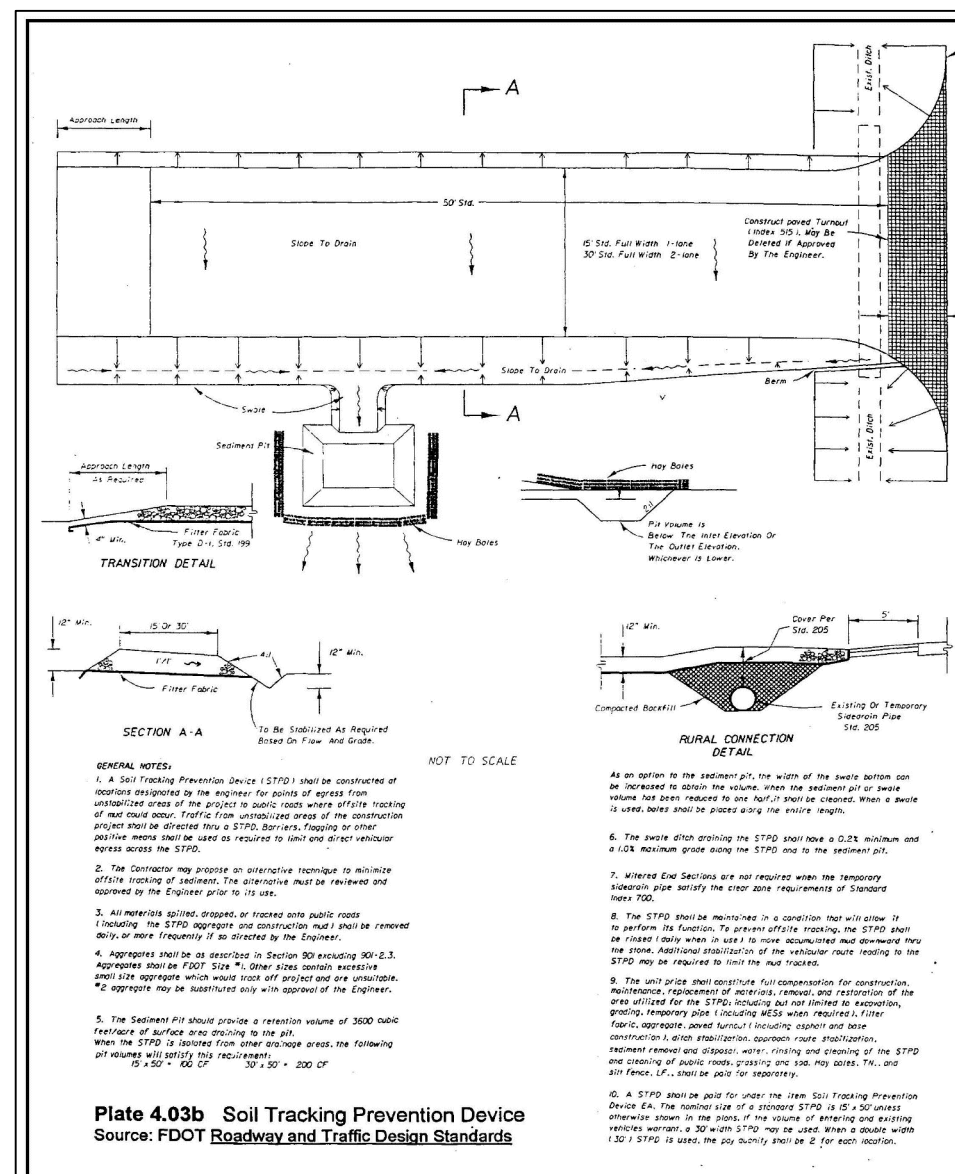


Figure 4.3b. Soil Tracking Prevention Device
Source: FDOT Roadway and Traffic Design Standards

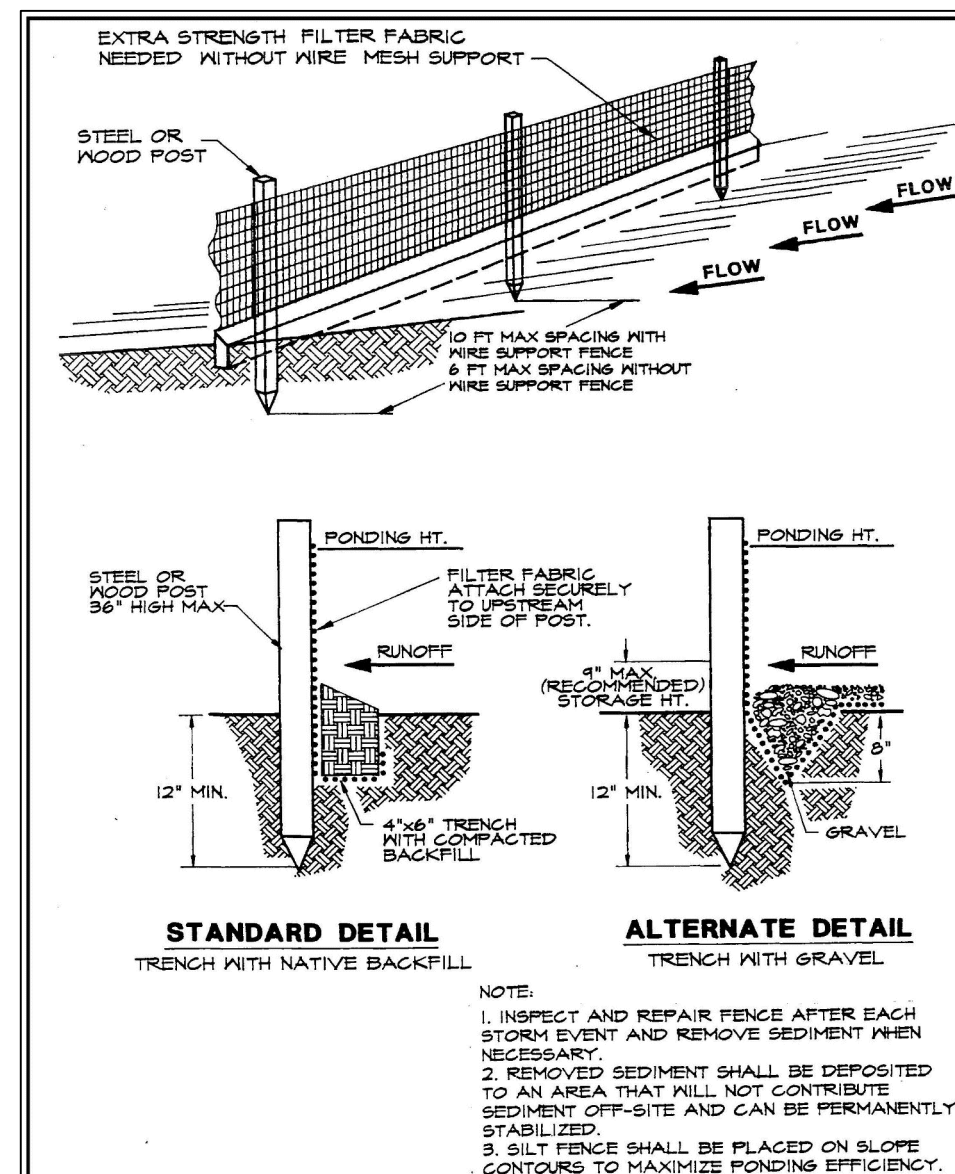


Figure 4.4a. Silt Fence
Source: Erosion Draw

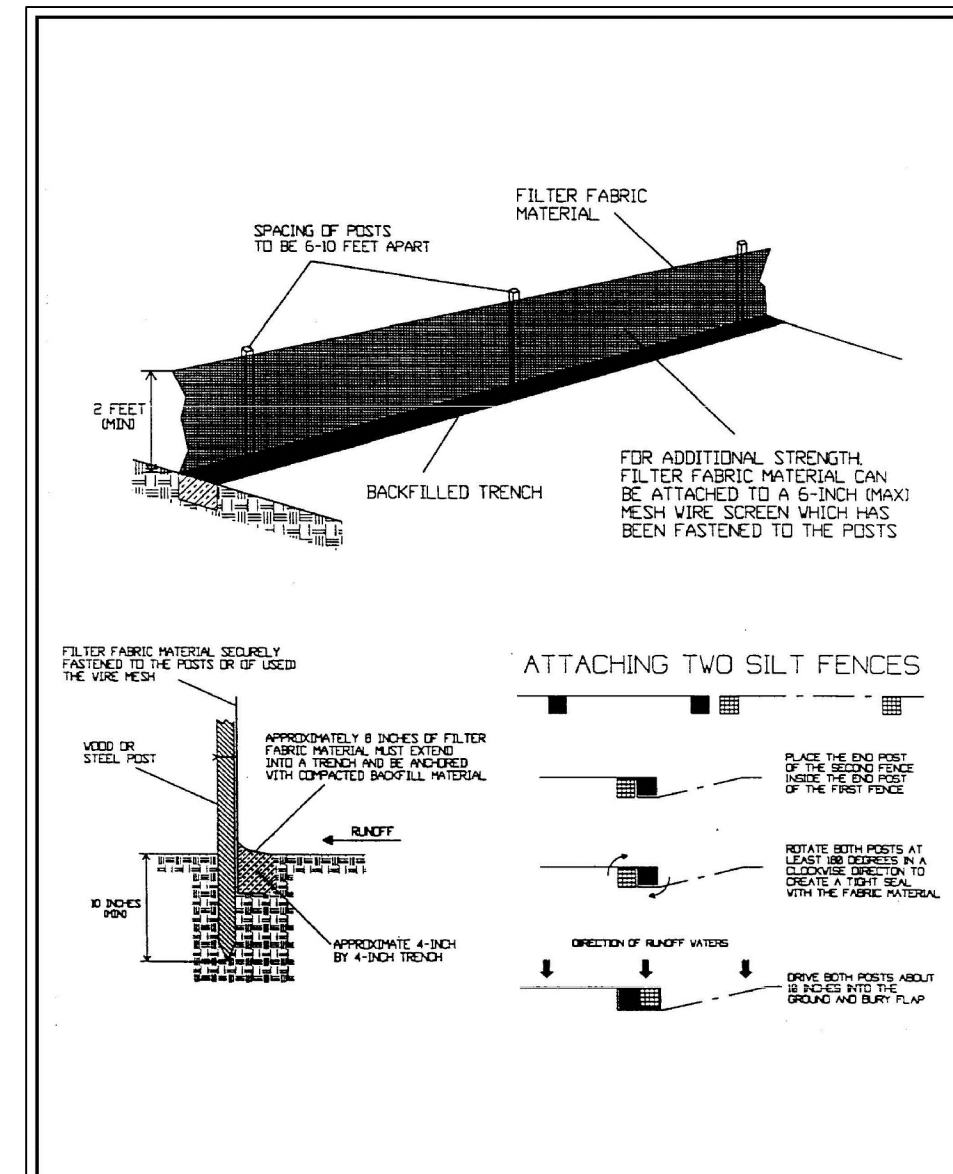


Figure 4.4b. Installing a Filter Fabric Silt Fence
Source: HydrDynamics, Inc.

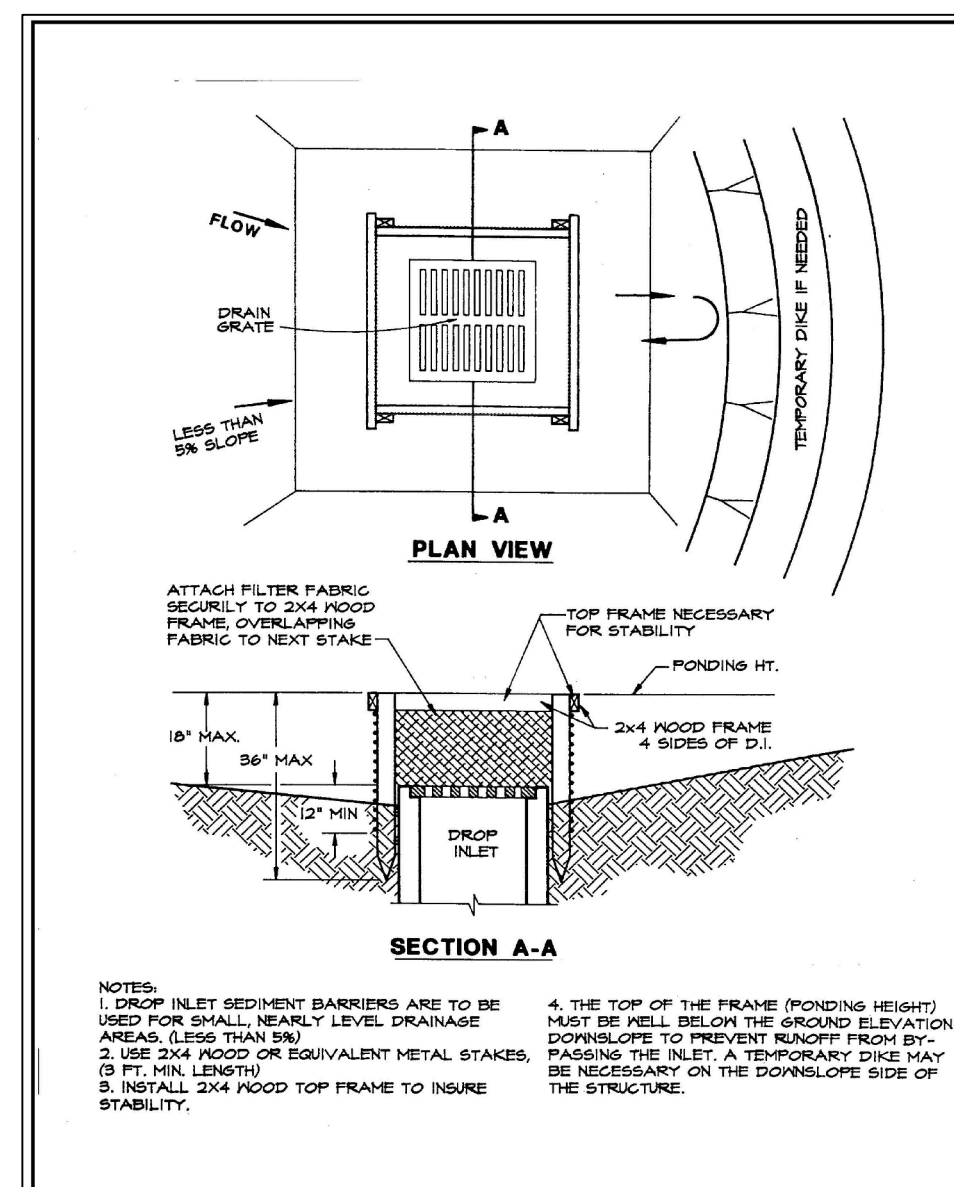


Figure 4.5a. Silt Fence Drop Inlet Sediment Barrier
Source: Erosion Draw

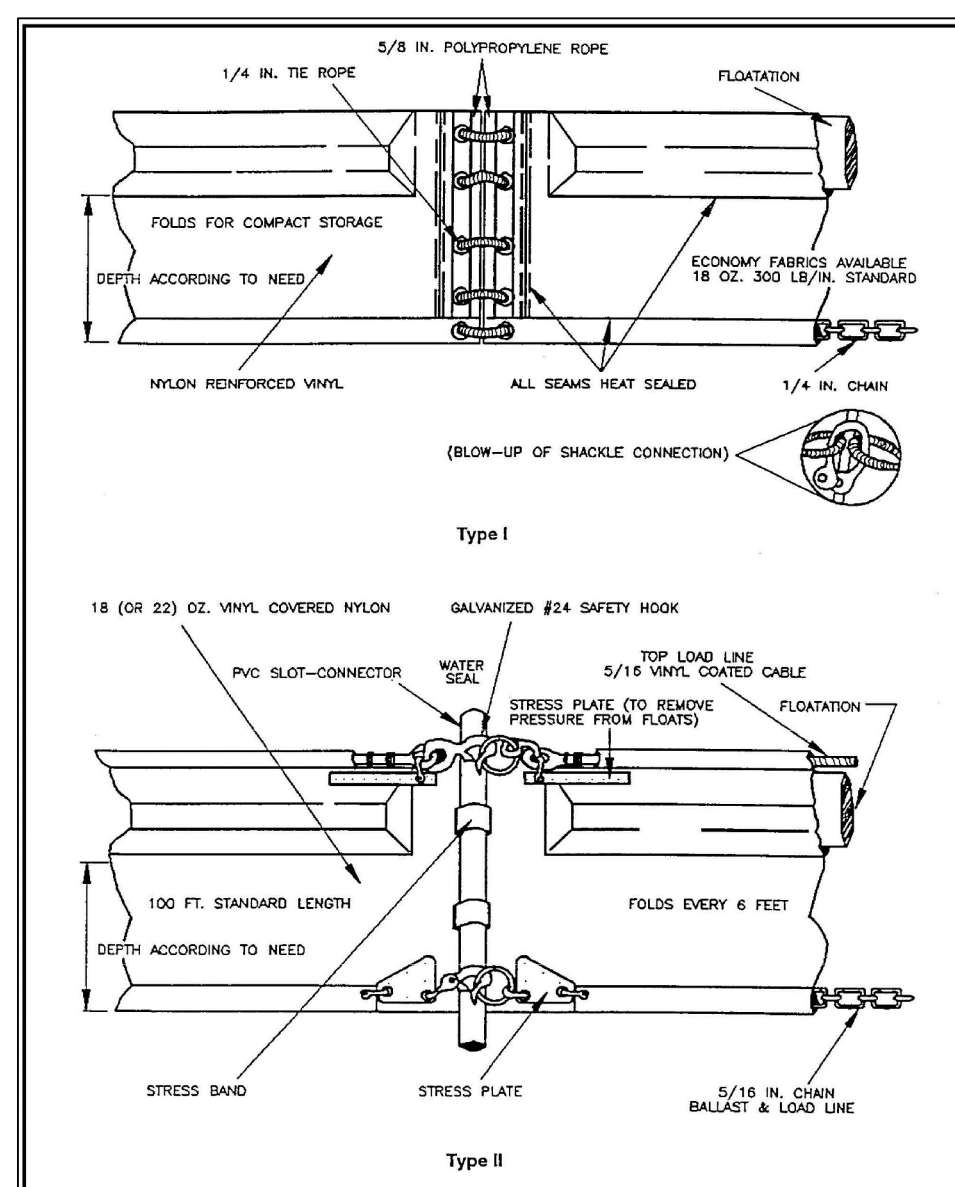


Figure 4.4i. Type I and II Floating Turbidity Barriers
Source: American Boom and Barrier Corporation

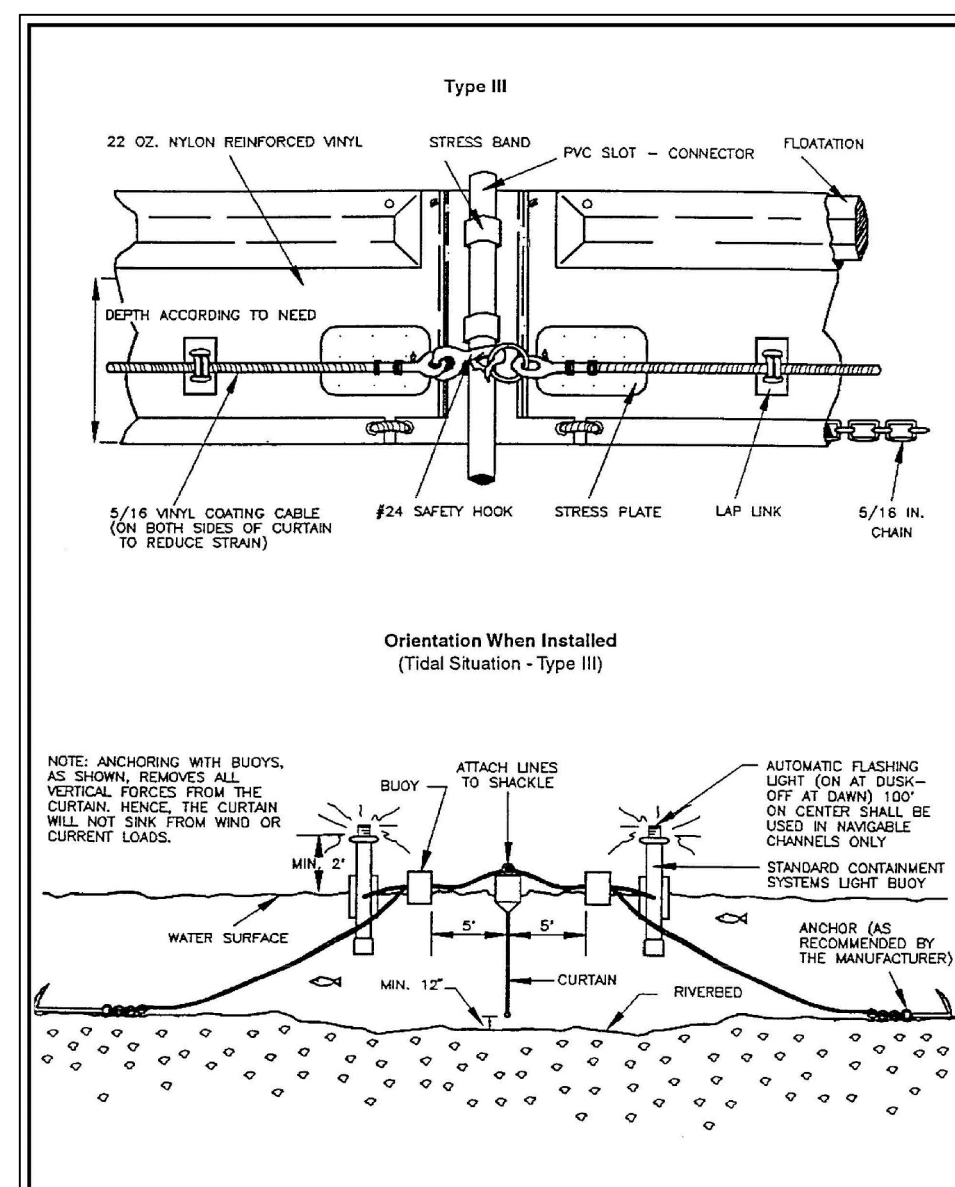


Figure 4.4m. Type III Floating Turbidity Barrier
Source: American Boom and Barrier Corporation and Virginia Department of Transportation (VDOT) Standard Sheets

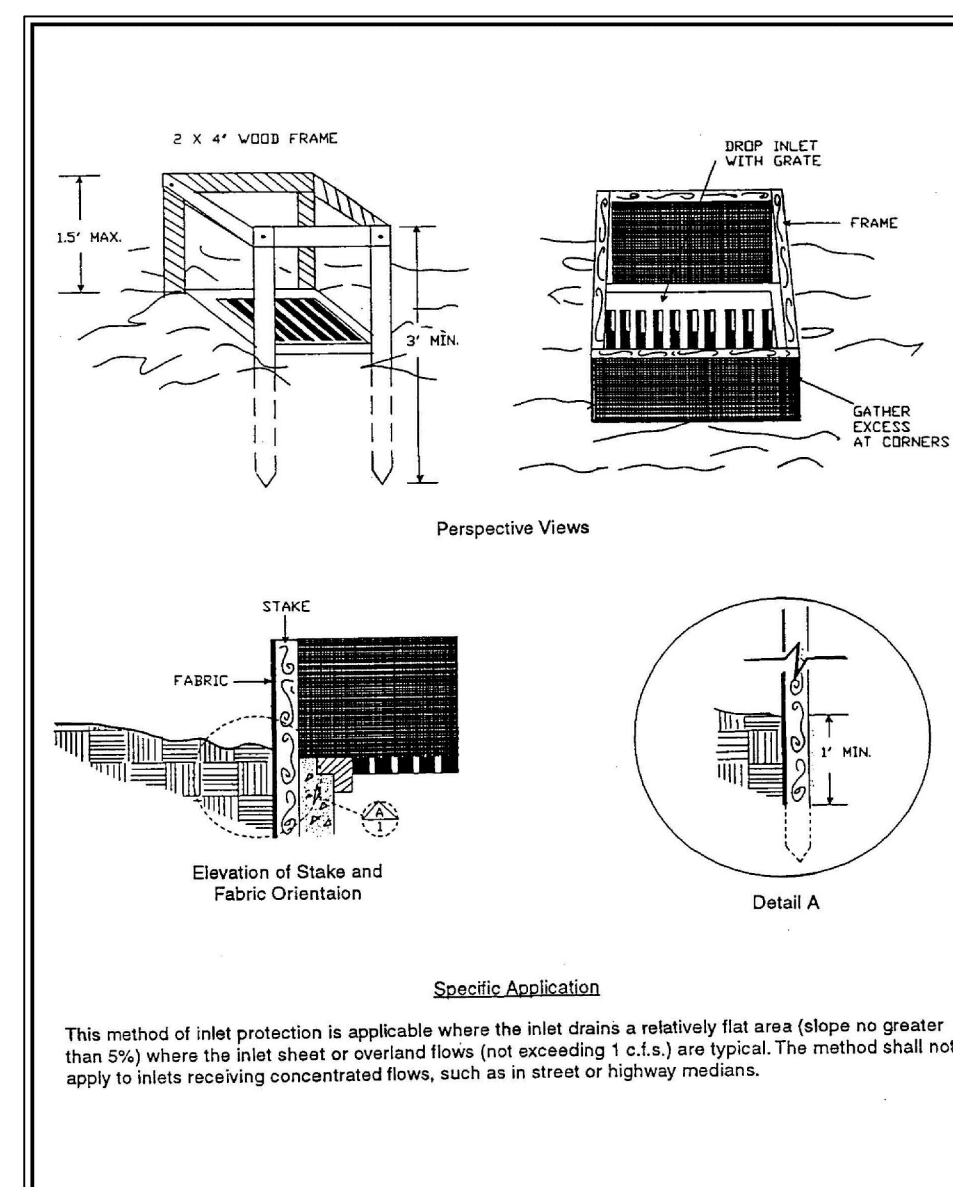


Figure 4.5b. Filter Fabric Drop Inlet Sediment Filter
Source: North Carolina Erosion and Sediment Control Manual

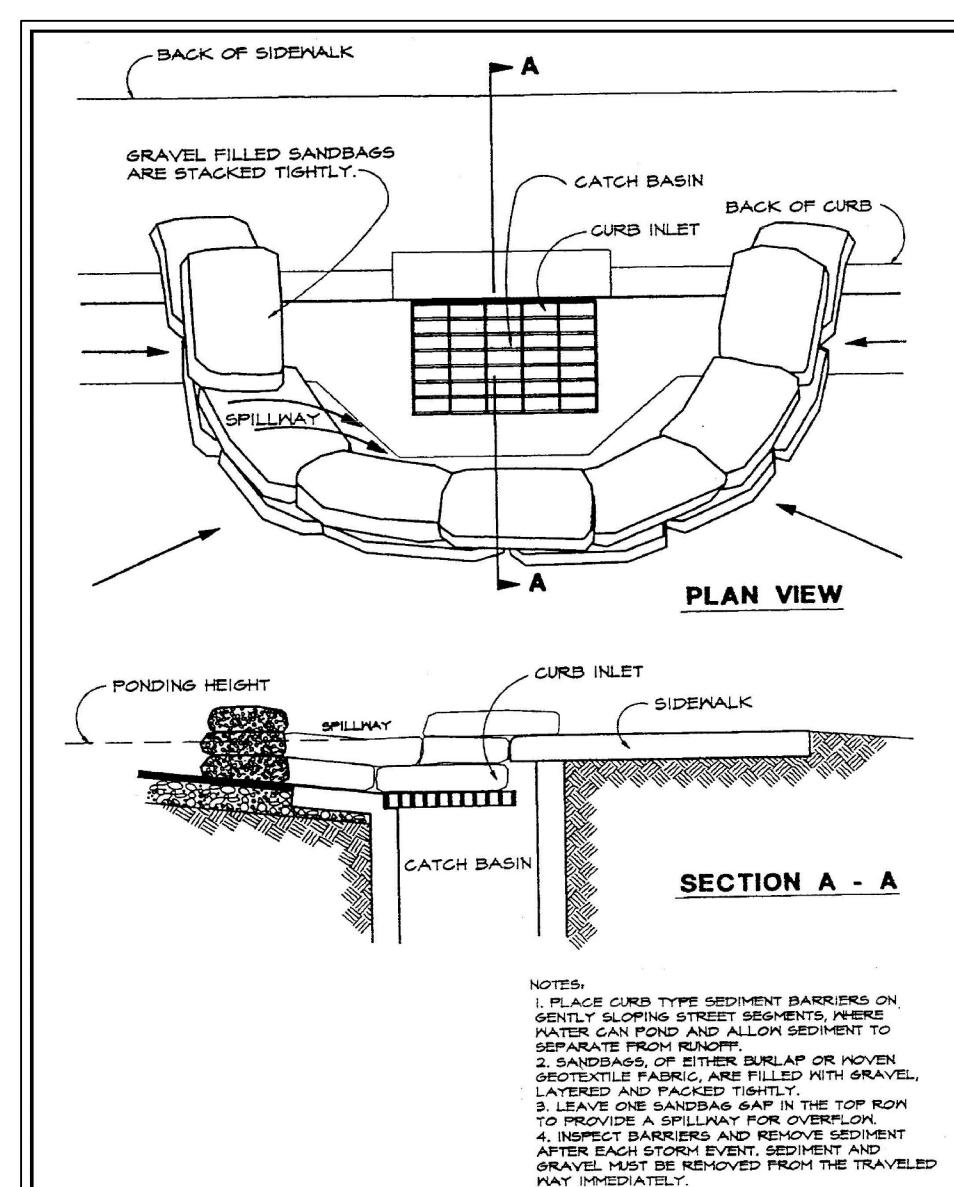


Figure 4.5k. Curb Inlet Sediment Barrier
Source: Erosion Draw

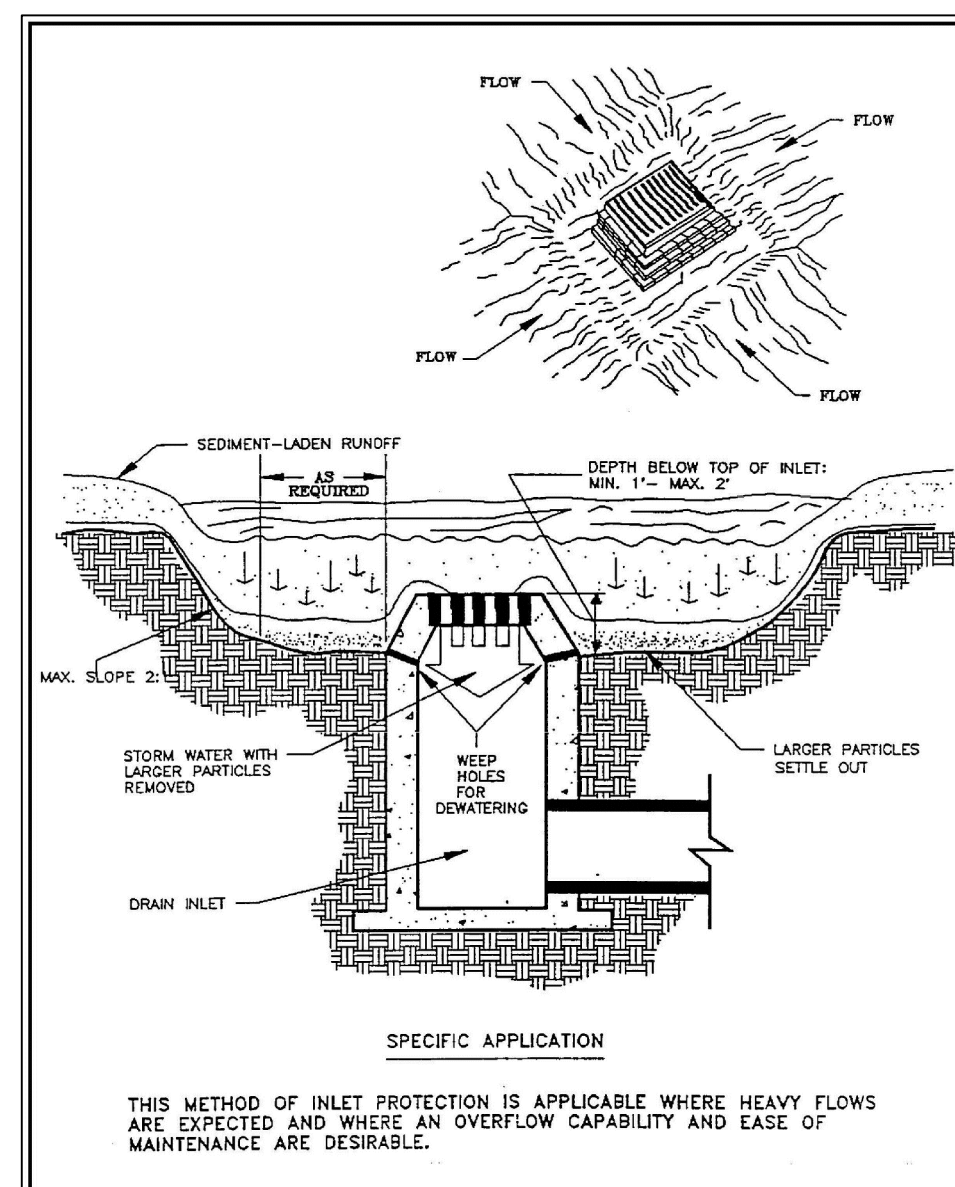


Figure 4.6e. Excavated Drop Inlet Sediment Trap
Source: Michigan Soil Erosion and Sedimentation Control Guidelines

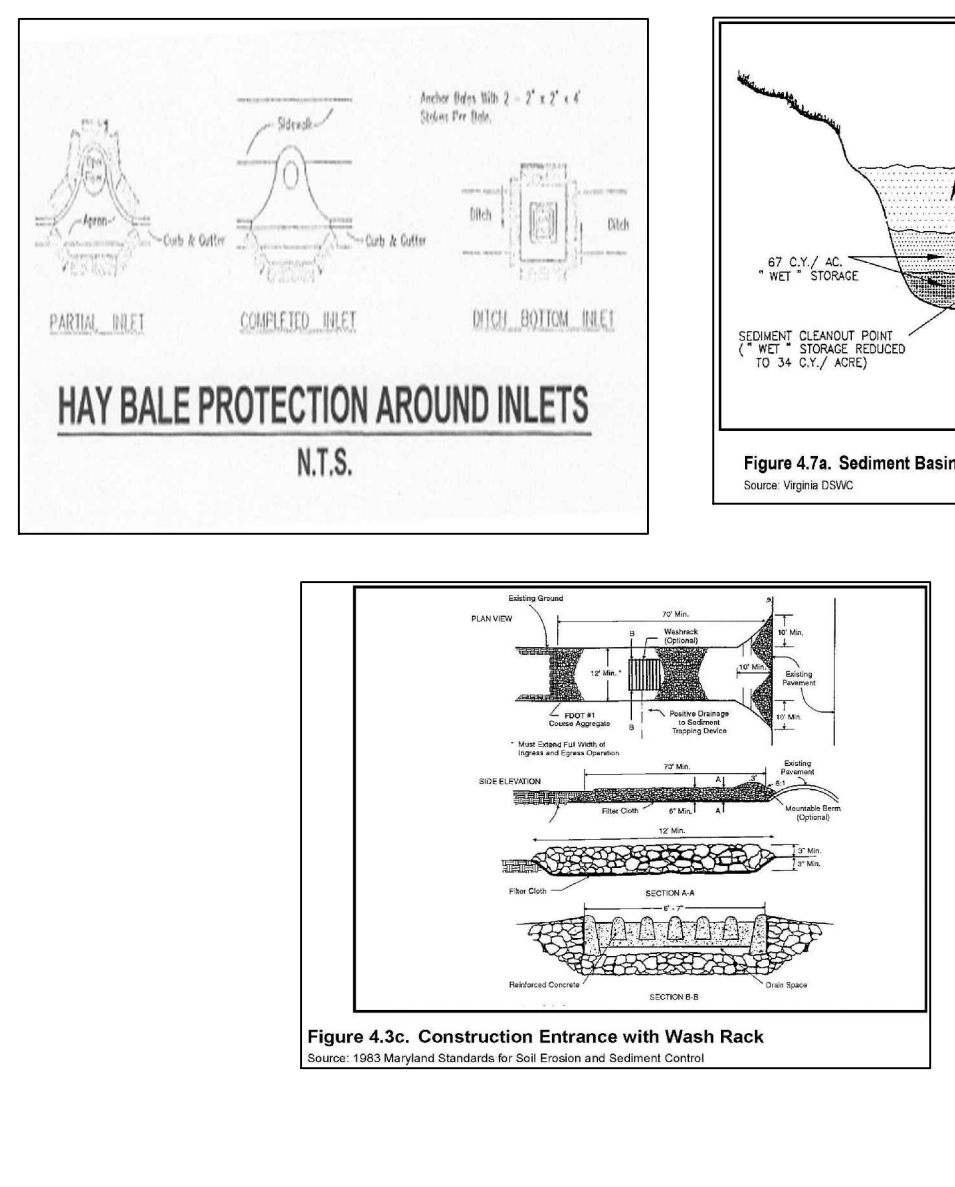


Figure 4.3c. Construction Entrance with Wash Rack
Source: 1983 National Standards for Soil Erosion and Sediment Control

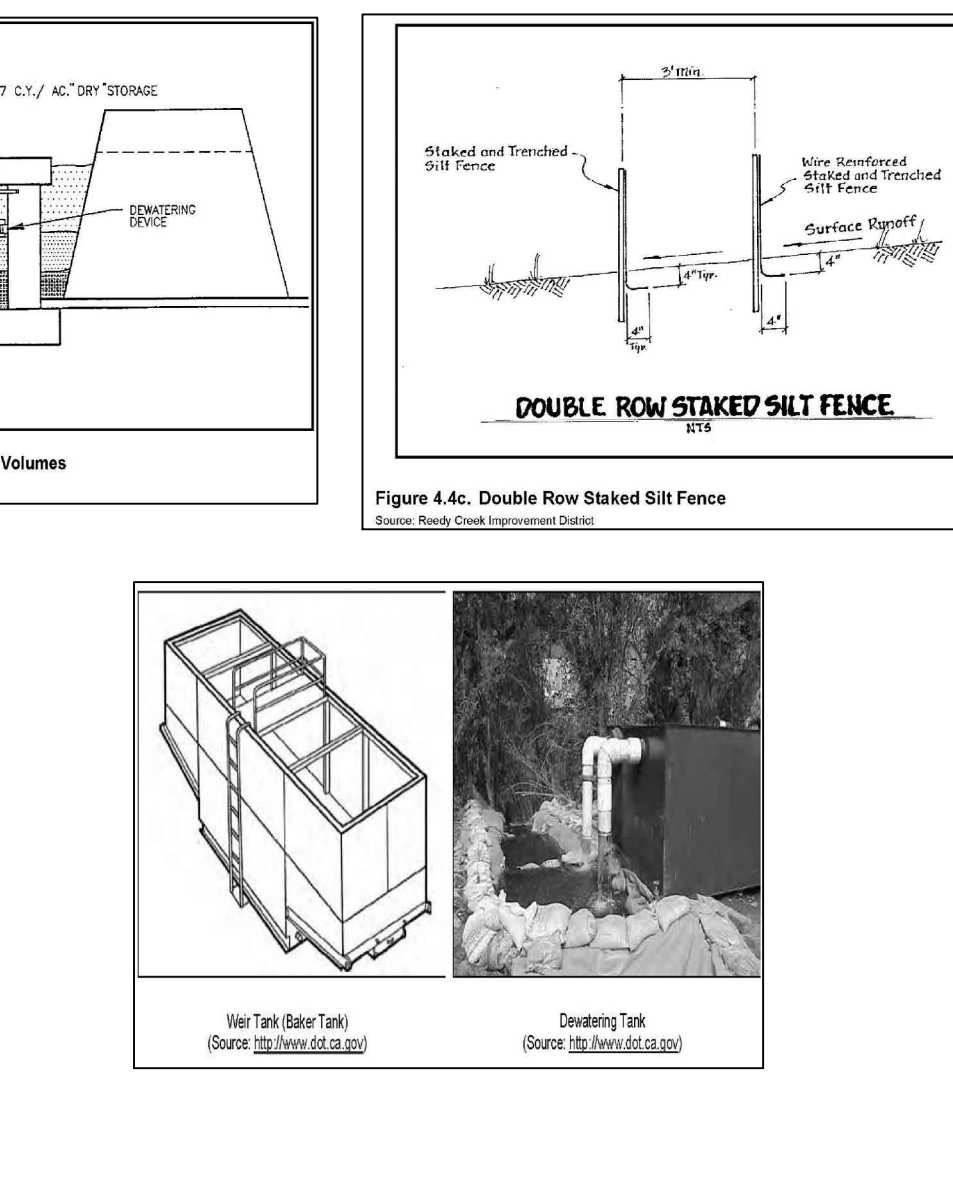


Figure 4.7a. Sediment Basin Storage Volumes
Source: Virginia DMG

NATIONAL POLLUTANT DISCHARGE ELIMINATION SYSTEM DETAILS

PROJECT NAME HERE

PREPARED FOR:
INSERT PROJECT NAME
PHONE NUMBER
AND ADDRESS HERE

APPROVED BY:
APPROVERS
INFORMATION
HERE

DATE:
DES.:
DRN.:
CKD.:
SCALE:
JOB NO.:

INSERT ENGINEERING FIRM & LOGO HERE